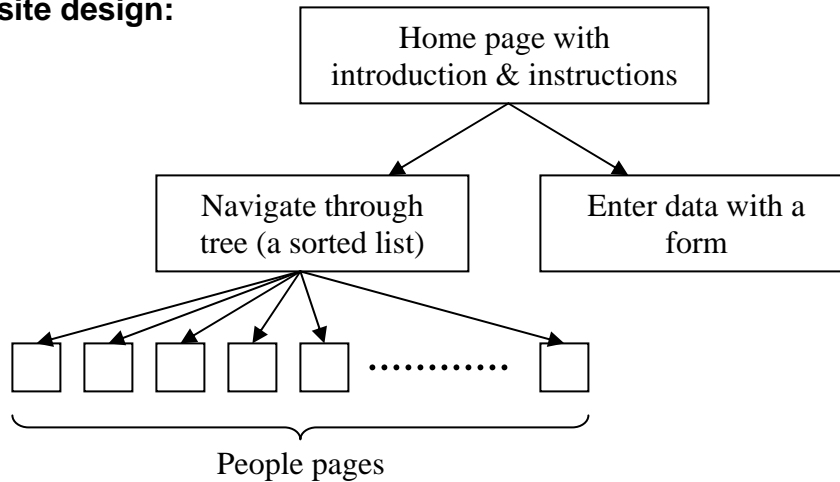


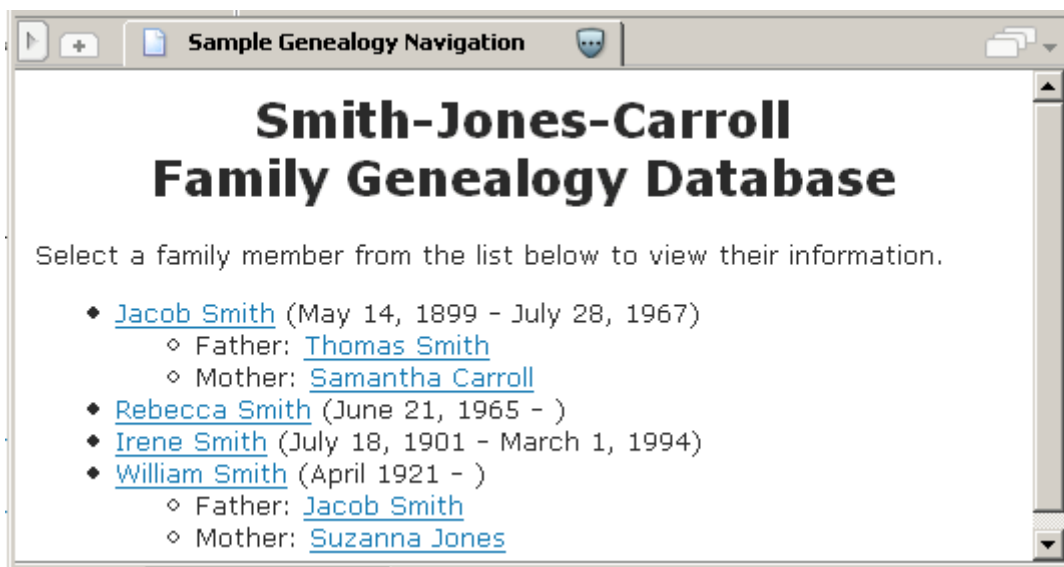
# Genealogy Project Database Design Discussion

## 1. General site design:



## 2. Site operation:

Assume that site navigation is primitive at best, i.e., the client will be navigating through the family tree simply by scanning a list of names each of which may have some additional information as a reference. For example, the navigation page may just be a bulleted list like that shown below:



Due to the complexities, there will be no tree structure. At most, an individual may have his or her parents shown as a sub-list beneath them.

In your teams, discuss the following design goals and decisions:

- Design a basic layout of a page describing a person
- Determine the information that you would like to see on that page
- Design the layout of the navigation page
- Determine the information that you would like to see on the navigation page

### **3. Table discussion:**

You will be developing PHP scripts to store, edit, and retrieve the data in your genealogy database. It is important to design the tables of your database so that they will be searchable and contain the information you will need. In your teams, discuss the following questions regarding the design of the database.

- What tables are you going to need?
- How are the pieces of information you developed from the previous section going to be allocated to the different tables?
- What key will be used to uniquely identify each table entry within each table?
- What are the data types you will use for each piece of information?