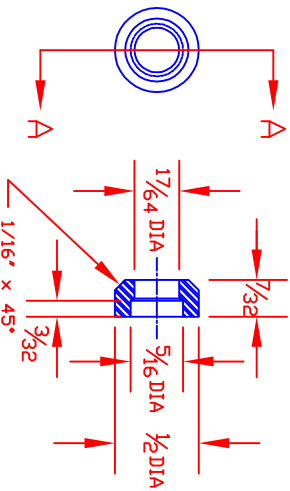


Revisions			
Rev	Date	Description	By
A	99-JAN-11	Revised Notes, BDM, Part Call-outs	W/KH
B	09-DEC-15	Redrawn & Reformatted	W/KH



SECTION A-A

- 125 Swivel, LC - Shown
- 225 Swivel, Brass - Same as
- 125 except as noted in BDM

NOTES:

- 1 Deburr/break all sharp edges
- 2 Apply preservative to part after fabrication
- 3 Manual fabrication IAW Rpt. LPI-2200-01 [C-Clamp]
- 4 CNC: Use CNC Pgrm 2200-53.cnc
Setup IAW Rpt. 2200-53.doc

Part No.	Description	Material	Specif	Stock Size
-225	Swivel, Brass	CA 360 Brass	ASTM B16	1/2 DIA Rnd x 1/4"
-125	Swivel, LC	1018 LC/CF Stl	MIL-S-11310	1/2 DIA Rnd x 1/4"

Tolerances

.x ±.1
.xx ±.03
.xxx ±.005
Fractional ±1/16
Angular ±.5°

Unless otherwise noted

<p>ETSU - ENTC 2200</p>			
<p>Dwg Name C-CLAMP ASSEMBLY SWIVEL, DETAILS DF</p>			
Size	Date	Dwg No	Rev
A	2009-DEC-15	2200-53	B
Scale	NTS	Dwg by	B. HEMPHILL