

Effects of Losing 0700 Courses on Passing Rates

Daryl Stephens

East Tennessee State University

Tennessee Association for Developmental Education

October 30, 2003

Background

- *Defining Our Future* says universities will not be funded for remedial courses beginning fall 2003.
- Number of students in 0700 courses had declined somewhat over the years. (See graph page 1.) For example, in math there were 156 students in 8 sections of what is now DSPM 0700 in the fall of 1996, but only 122 in 5 sections in the fall of 2001. In reading, the numbers went from 33 to 18 for those same two semesters. On the other hand, the writing enrollment increased from 34 to 84.
 - On average, from 1995-2001 in fall semesters, reading enrollment decreased by 2.4 per year; writing enrollment increased by 8.75, and math enrollment decreased by 18.8.
 - In spring semesters, from 1995-2001, reading enrollment dropped from 20 to 0 (an average of -3.1 per year), writing increased by about 2 per year, and math decreased by 7.5 per year.
- Decision was made to drop 0700 courses (reading, writing, and mathematics) in fall, 2002. Students would be holistically assessed and placed into 0800 courses with additional help available (writing lab, math lab, etc.).
- For comparison, passing rates of 0700 courses in Fall, 2001 (Computed by grades of A – C and F, not counting FN/W/WF):
 - Reading 84%
 - Writing 77%
 - Math 78%

Making the Transition

- Faculty were informed of the decisions. Subject area faculty met together to determine what actions to take to deal with the changes.
- Time was spent during the semester in the 0800 courses to do review of 0700 concepts as necessary (Examples: Main idea in reading, packet of sentence exercises in writing, first chapter reviewing computation in algebra.)
- Tutorials were available in the math lab (including computer tutorials) and the writing and communications center. Tapes from the 0700 math courses were still available in the library media center.
- Students whose test scores indicated they take 0700 were placed in the 0800 course instead.

Results for Fall, 2002 Students in 0800

In all cases, grades of W, WF, and I were not considered. See "Tracking Table" for more information.

Reading:

- Passing rates were not much different for students placed in 0700 or 0800. Grade point averages were a little lower for 0700-placed students. (No significant differences were found when using the two-proportion z -test or the t test.)
- Four students who failed reading retook the class; all four failed the second time.

Writing:

- Passing rates were quite similar, especially if FN grades were deleted. GPA was about the same for both groups.
- Of those who failed DSPW 0800 in fall, 22 retook the course in the following spring or summer. Oddly enough, passing rates were higher (62.5%) for 0700-placed students than 0800-placed students (42.9%), and GPAs were higher by about 0.4. However, these differences were not statistically significant.
- Of students who went on to take the first freshman English course in spring or summer, all 24 of the 0700-placed students passed with a mean GPA of 2.758 compared to 107 of the 122 students placed in 0800 with a mean GPA of 2.637. Again, there was no statistical difference in these rates.

Math

- In the fall of 2002, there was a statistically significant difference ($p = .0002$ in the 2-proportion z test) between passing rates for 0800-placed vs. 0700-placed students (74% vs. 53%). If the FN grades are factored out, the passing rate for 0700-placed students rose to 60%, which compares to the 78% pass rate for students in 0700 for fall, 2001.
- Students who failed, then retook 0800 in the spring or summer had exactly the same success rate (50%) regardless of original placement.
- Students who took DSPM 0850 in spring or summer of 2003 passed at comparable rates regardless of original placement.

Notes

- Because the grades were not continuous, t -tests couldn't really be legitimately used to compare means. Running them for the heck of it, though, showed the same results (checking for a significance at the $\alpha = .05$ level) as the two-proportion z -tests. Even the z tests are slightly suspect because the grades were not normally distributed.

Tracking DSPR/DSPW/DSPM 0800 Students at ETSU, Fall, 2002

	Placement	Reading			Writing			Mathematics*		
		0800	0700	Total	0800	0700	Total	0800	0700	Total
Fall, 2002 – 0800 Course	Passed	54 93.1%	7 77.8%	61 91.0%	153 77.7%	36 73.5%	189 76.8%	271 74.0%	43 53.1%	314 70.2%
	Failed	4 6.9%	2 22.2%	6 9.0%	44 22.3%	13 26.5%	57 23.2%	95 26.0%	38 46.9%	133 29.8%
	Total	58	9	67	197	49	246	366	81	447
	Mean	3.233	2.444	3.127	2.418	2.161	2.367	2.434	1.607	2.285
	W/WF/I	1	0	1	15	5	19	27	6	33
Next Course Spring/Sum 2003	Course				ENGL 1010			DSPM 0850		
	Passed				107 87.7%	24 100%	131 89.7%	197 81.7%	30 76.9%	227 81.1%
	Failed				15 12.3%	0	15 10.3%	44 18.3%	9 23.1%	53 18.9%
	Total				122	24	146	241	39	280
	Mean				2.637	2.758		2.646	2.203	
	W/WF/I				2	1	3	13	1	14
Repeat Course Spring/Sum 2003	Course	DSPR 0800			DSPW 0800			DSPM 0800		
	Passed	0	0	0	6 42.9%	5 62.5%	11 50.0%	25 50.0%	8 50.0%	33 50.0%
	Failed	2 100%	2 100%	4 100%	8 57.1%	3 37.5%	11 50.0%	25 50.0%	8 50.0%	33 50.0%
	Total	2	2	2	14	8	22	50	16	66
	Mean	0.000	0.000		1.357	1.788		1.352	1.231	
	W/WF/I	0	0	0	1	1	2	4	4	8
No return				74	19	93	89	28	117	

Note: "No return" numbers indicate students who neither took the next course nor repeated the course. These numbers are not the fall numbers minus the numbers who took the next course or repeated, as some students who failed in fall repeated and passed in spring and then took the next course in summer.

Grades of W, WF, I, or AU are not included in the pass/fail totals. Failure includes both F and FN.

Results for Spring, 2003

For students who took an 0800 class in the spring, results were similar to the fall of 2002. Followup information for summer or fall is not yet available.

For the reading course, there was a significant difference between passing rates for 0800- and 0700-placed students (about 85% of 0800-placed students passed as opposed to 25% of 0700-placed). However, since only four students tested as 0700 level, a truly valid comparison could not really be made.

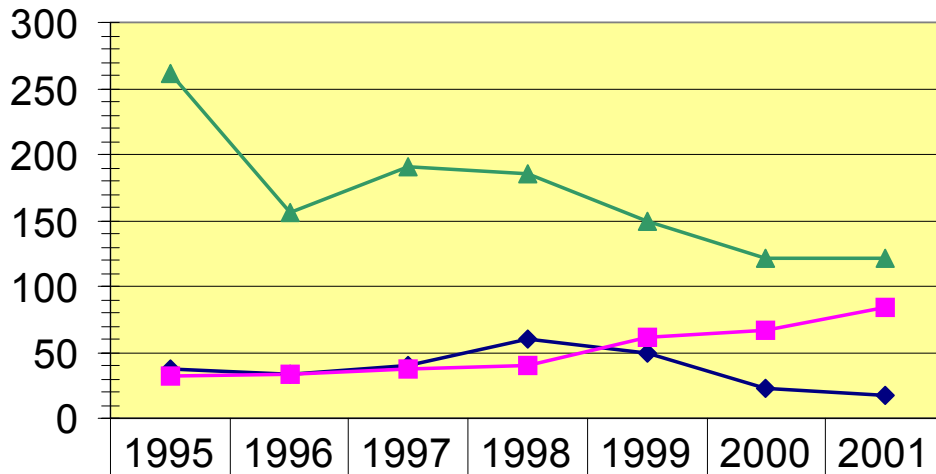
In the writing course, students passed at about the same rate regardless of placement. (53.6% of 0800-placed vs. 57.7% of 0700-placed); mean grade point was almost identical (1.768 vs. 1.742).

In the math course, there was again a significant difference in passing rates (63.2% for 0800-placed, 43.5% for 0700-placed) and mean grades (2.017 vs. 1.267).

Grades in 0800 Classes, Spring, 2003

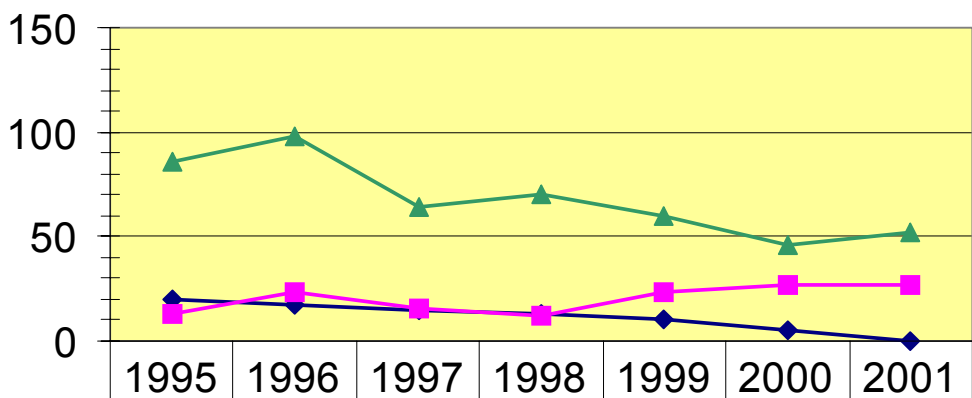
	Reading			Writing			Mathematics		
	0800	0700	Total	0800	0700	Total	0800	0700	Total
Passed	29 85.2%	1 25%	30 78.9%	30 53.6%	15 57.7%	45 54.9%	79 63.2%	20 43.5%	99 57.9%
Failed	5 14.7%	3 75%	8 21.1%	26 46.4%	11 42.3%	37 45.1%	46 36.8%	26 56.5%	72 42.1%
Total	34	4	38	56	26	82	125	46	171
Mean	2.768	1.000		1.768	1.742		2.017	1.267	
W/WF/I	0	0	0	8	4	12	10	6	16

Trends in Fall 0700 Enrollment



◆ Reading	37	33	40	60	49	23	18
■ Writing	32	34	38	40	61	67	84
▲ Math	261	156	191	185	150	122	122

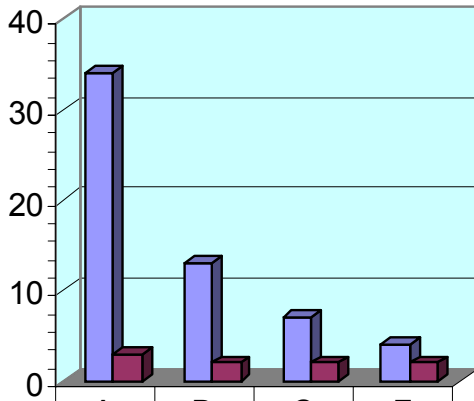
Trends in Spring 0700 Enrollment



◆ Reading	20	17	15	13	10	5	0
■ Writing	13	23	16	12	23	27	27
▲ Math	86	98	64	70	60	46	52

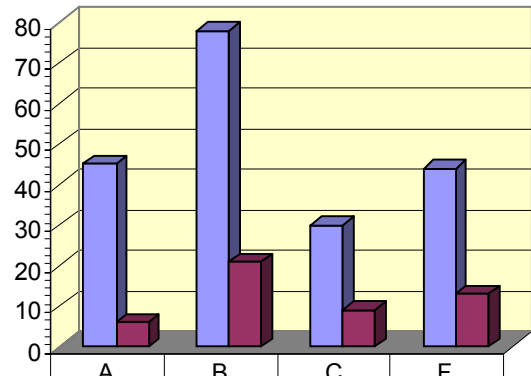
Fall 2002 Grades in 0800 Classes

DSPR 0800 Grades, Fall, 2002



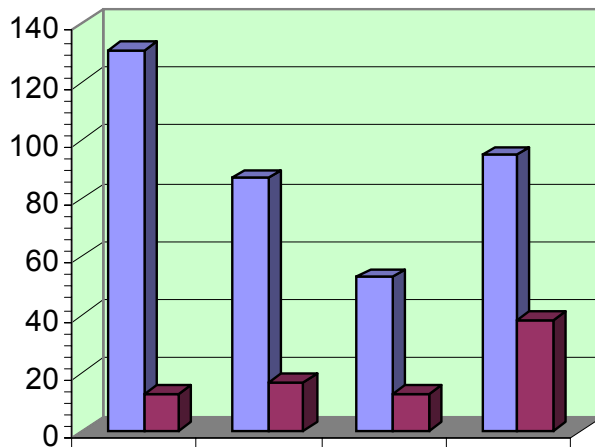
0800	34	13	7	4
0700	3	2	2	2

DSPW 0800 Grades, Fall, 2002



0800	45	78	30	44
0700	6	21	9	13

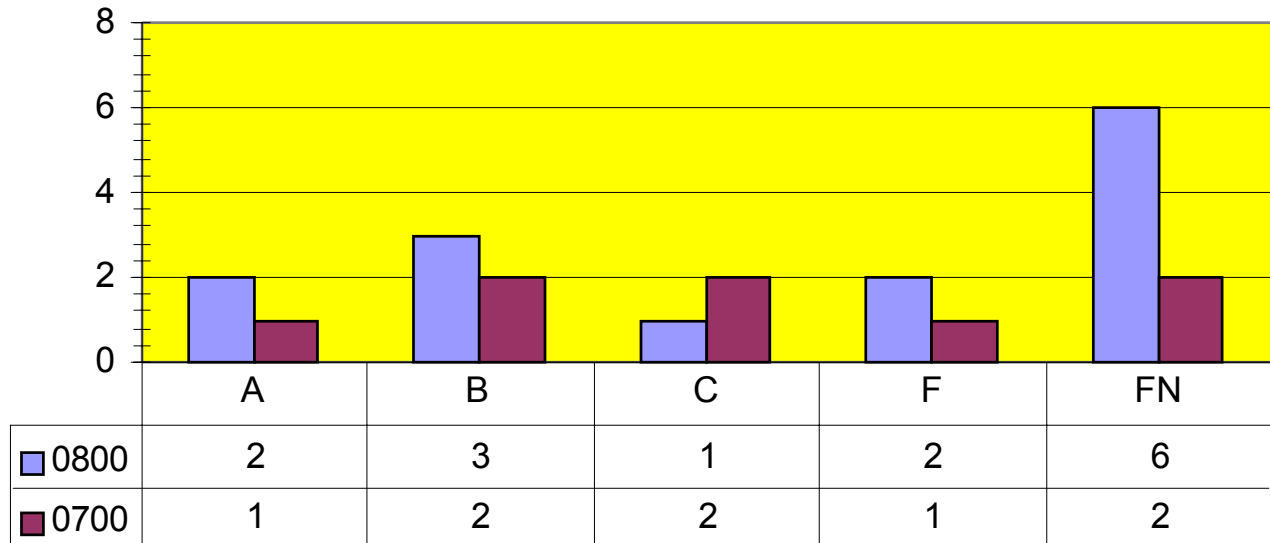
DSPM 0800 Grades, Fall, 2002



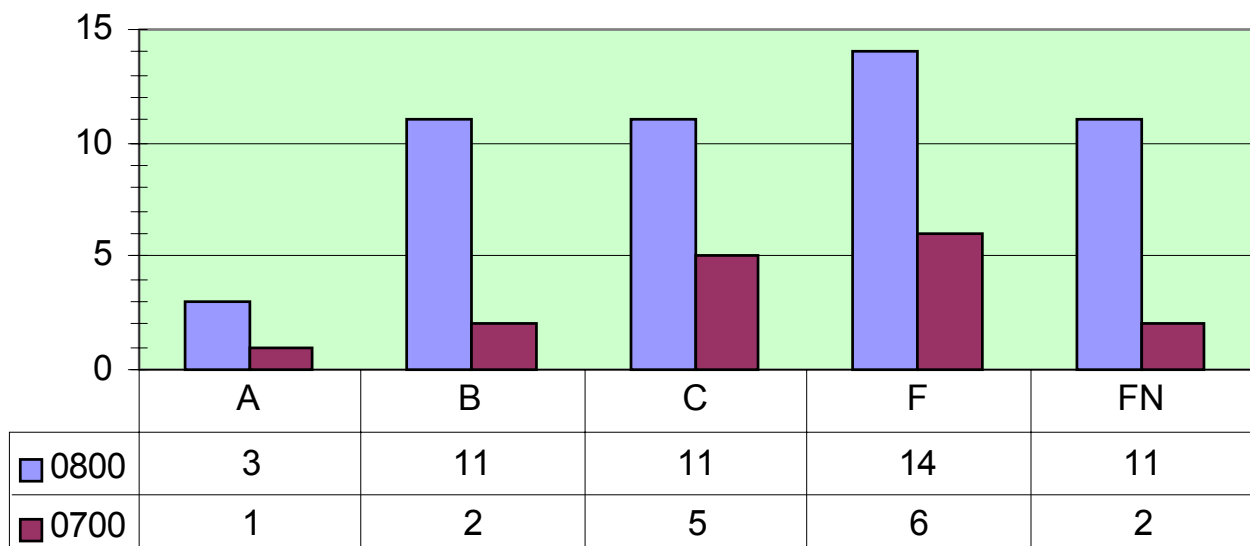
0800	131	87	53	95
0700	13	17	13	38

Grades for Repeaters (Took 0800 in Fall and Repeated in Spring or Summer)

Repeating DSPW 0800--Spring/Summer, 2003

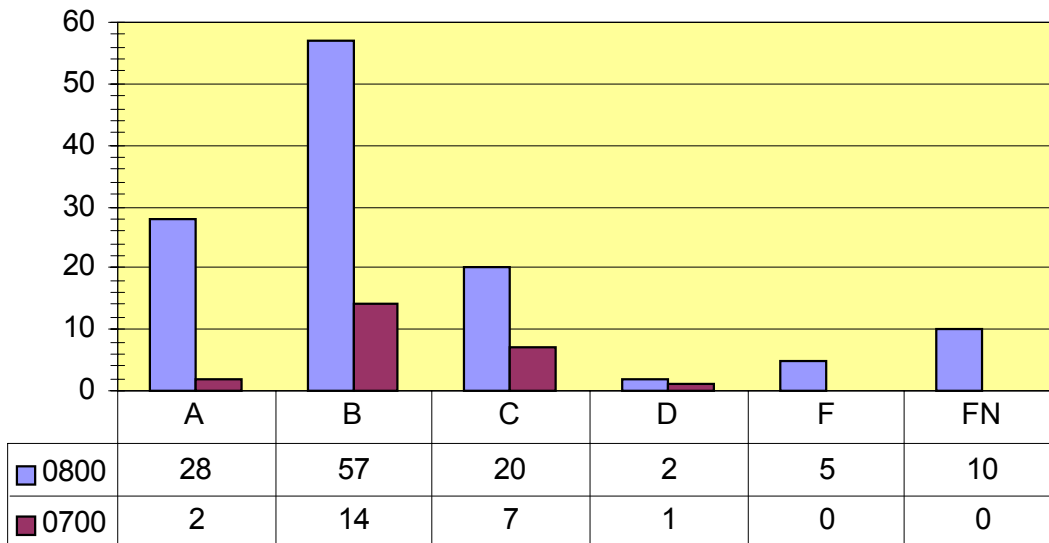


Repeating DSPM 0800--Spring or Summer, 2003



Grades for Next Course (Took 0800 in Fall and ENGL 1010 or DSPM 0850 in Spring or Summer)

Grades in ENGL 1010--Spring/Summer 2003



DSPM 0850--Spring or Summer, 2003

