

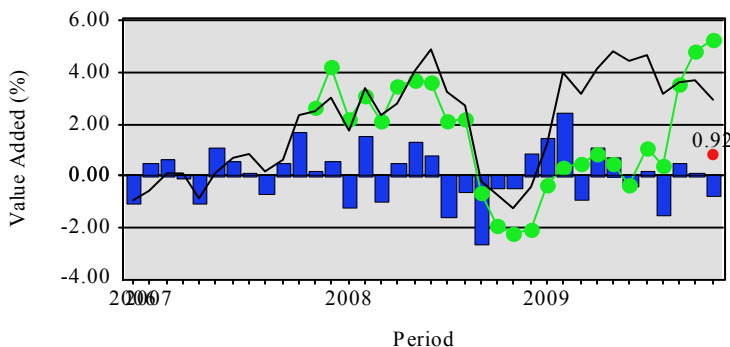
November 2009

### Performance Updates

The market had a strong November after the decline in October. The ICP had negative relative performance. For the month, the ICP returned 5.26% vs. 6.00% for the S&P 500. For the year, the ICP is still ahead. The ICP has returned 28.25% vs. 24.07% for the S&P 500. The ICP is also ahead on a rolling 3 year basis. Over this period, the ICP has returned -4.90% vs. -5.79% for the S&P 500.

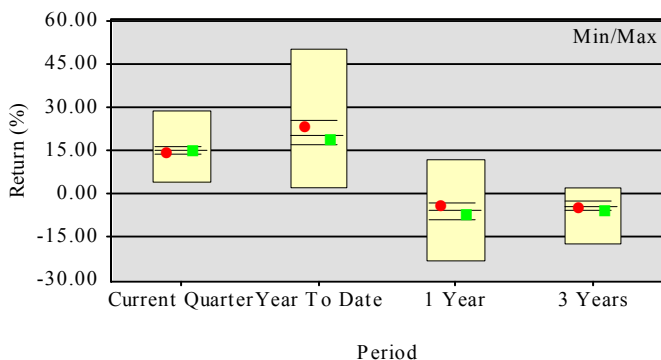
Happy Holidays

### ICP 3 Year Value Added



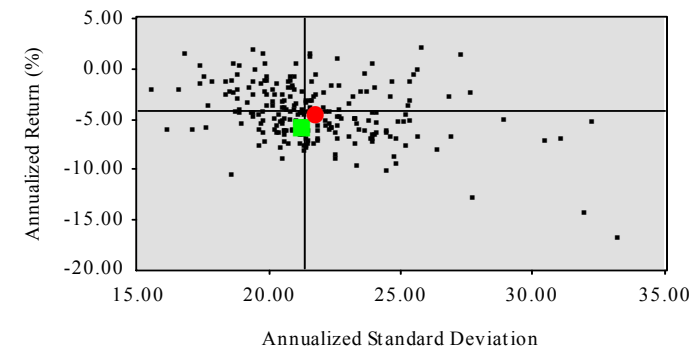
■ Annualized since 12-2006      ■ Cumulative Value Added  
■ Annualized Value Added      ■ Value Added

### ICP 3 Year Universe Performance



● ICP      ■ S&P 500

### ICP 3 Yr. Universe Risk/Return



● ICP      ■ S&P 500

November Performance		YTD Performance		Rolling 3-Year Performance	
1 D	7.74	1 I	53.76	1 I	0.53
2 P	7.24	2 X	39.82	2 R	-0.05
3 W	6.81	3 P	38.43	3 F	-0.81
4 F	6.59	4 G	35.66	4 N	-2.05
5 B	6.27	5 U	35.38	5 G	-2.18
6 G	6.21	6 C	34.13	6 E	-2.26
7 I	6.15	7 F	32.44	7 Y	-3.30
S&P	6.00	8 L	31.99	8 H	-3.58
8 E	5.77	9 T	31.08	9 W	-4.02
9 C	5.76	10 O	30.99	10 D	-4.20
10 X	5.55	11 S	30.75	11 X	-4.28
11 K	5.45	ICP	28.25	12 K	-4.62
12 S	5.39	12 V	27.61	13 V	-4.73
13 U	5.27	13 Y	25.23	ICP	-4.90
14 Y	5.27	14 W	24.57	14 U	-5.12
ICP	5.26	15 N	24.25	15 P	-5.36
15 N	4.98	16 Q	24.17	S&P	-5.79
16 O	4.65	S&P	24.07	16 C	-5.80
17 T	4.57	17 H	24.00	17 L	-6.20
18 J	4.21	18 K	22.71	18 S	-7.20
19 V	4.21	19 D	22.26	19 B	-7.72
20 R	4.08	20 E	22.11	20 O	-8.27
21 H	3.74	21 R	20.71	21 T	-8.54
22 L	3.67	22 J	19.97	22 Z	-8.63
23 Q	3.48	23 B	17.16	23 J	-8.97
24 Z	2.11	24 Z	11.00	24 Q	-9.88

### Contact Information

Eric Davis, CFA  
 Manager, Investment Trusts  
[ejdavis@tva.gov](mailto:ejdavis@tva.gov)