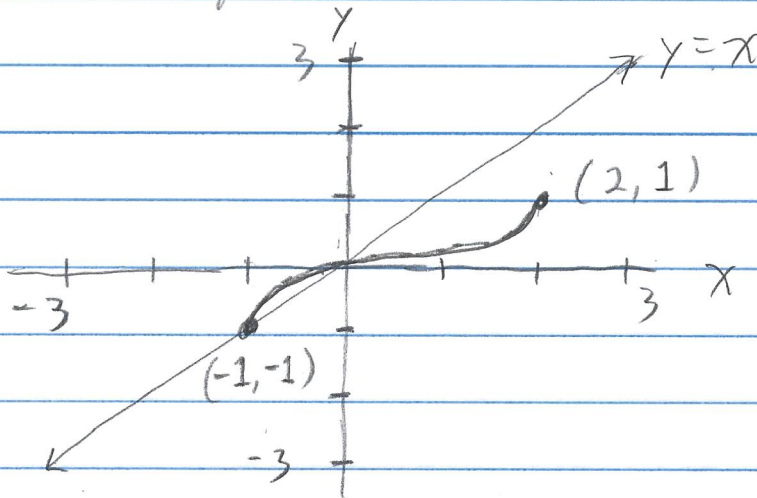
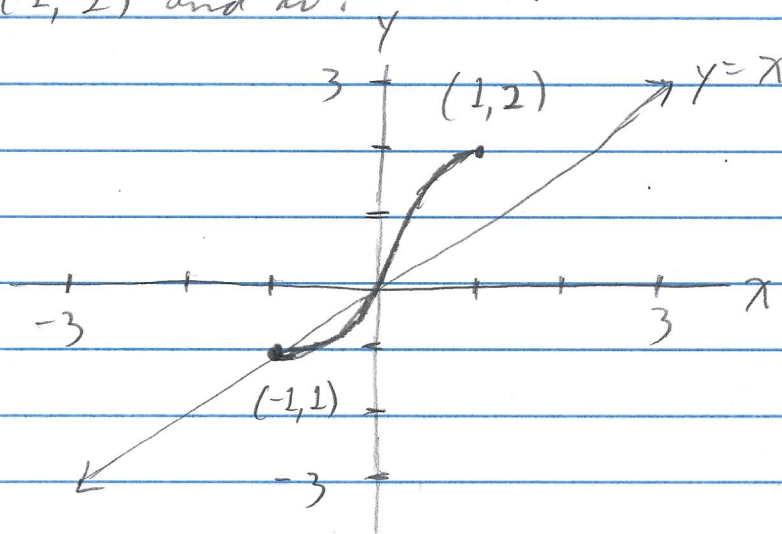


Exercise 5.2.29 The graph of a one-to-one function is given. Draw the graph of the inverse function f^{-1} :



Solution

By Theorem 5.2.C, the graph of f and the graph of f^{-1} are symmetric with respect to the line $y=x$. So the graph of f^{-1} includes the points $(-1, -1)$ and $(1, 2)$ and is:



□